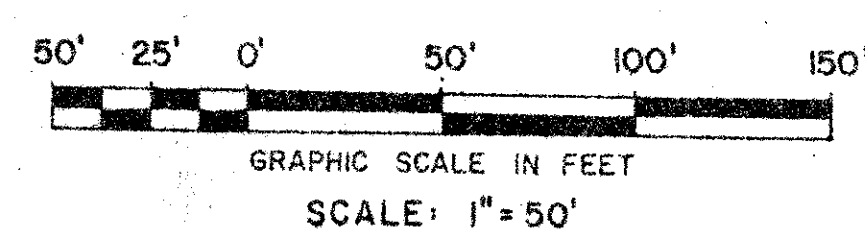
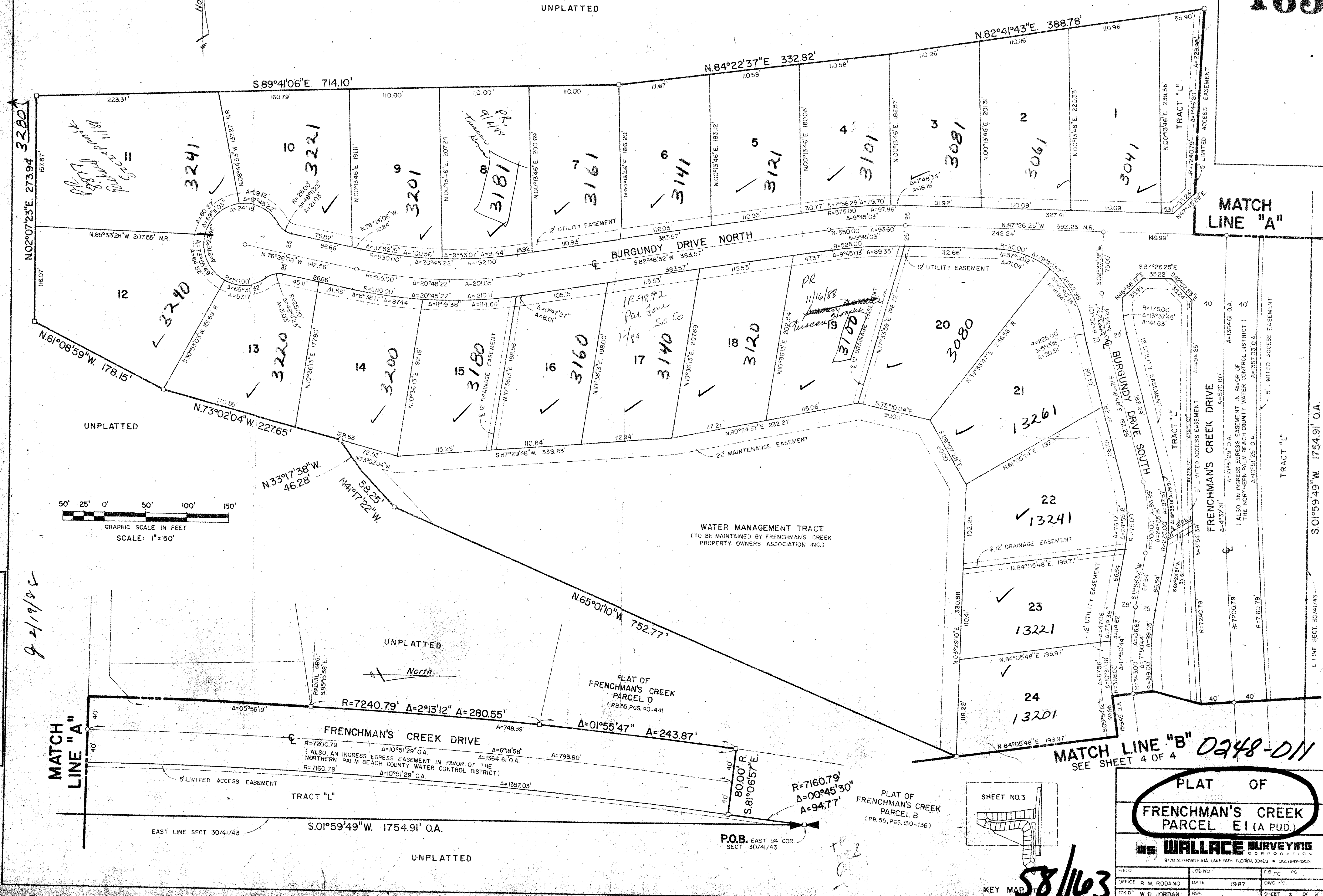


UNPLATTED

North



TAZ 48  
SUBDIVISION \* Frenchman's Creek  
BLOCK 11  
FLOOD ZONE B  
ROAD \* 12  
SIC  
PUD NAME Parcel E1  
PAGE 163  
FLOOD MAP \* 1248  
ZONING  
ZIP CODE 33410

9/2/19/05

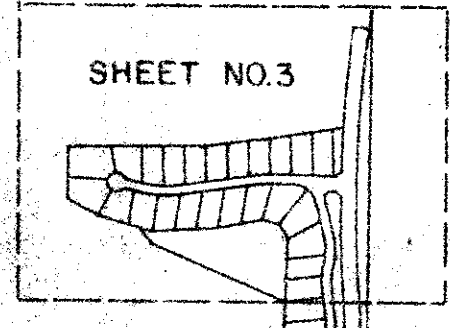
MATCH LINE "A"

MATCH LINE "B" 0248-D11  
SEE SHEET 4 OF 4

TRACT "L"  
5' LIMITED ACCESS EASEMENT  
R=7200.79' Δ=2°13'12" A=280.55'  
R=7200.79' Δ=10°51'29" O.A. Δ=6°18'58" A=1364.61' O.A.  
R=7160.79' Δ=10°51'29" O.A. Δ=10°51'29" O.A.  
R=7160.79' Δ=10°51'29" O.A. Δ=10°51'29" O.A.

FLAT OF FRENCHMAN'S CREEK PARCEL D (PB.55, PGS. 40-44)

PLAT OF FRENCHMAN'S CREEK PARCEL B (PB.55, PGS. 130-136)



PLAT OF FRENCHMAN'S CREEK PARCEL E1 (A PUD)

WALLACE SURVEYING CORPORATION  
9176 ALTERNATE ATA, LAKE PARK, FLORIDA 33403 • 305/842-0203

FIELD	JOB NO.	FB	PC
OFFICE	R. M. RODANO	DATE	1987
CK'D	W. D. JORDAN	REF	SHEET 3 OF 4

58/163

P.O.B. EAST 1/4 COR. SECT. 30/41/43

MATCH LINE "A"

UNPLATTED

UNPLATTED

UNPLATTED

UNPLATTED